

Tex-Design™

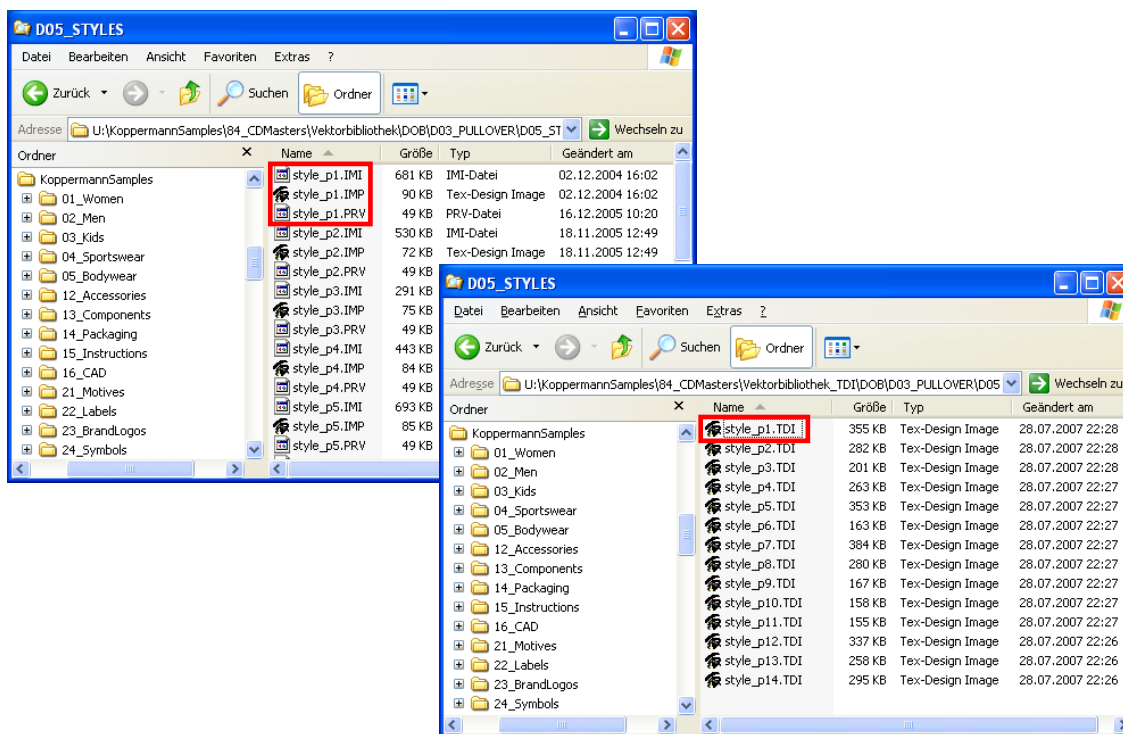
Feature Improvements

Version 7.00.226 - 7.00.228

General

File Format

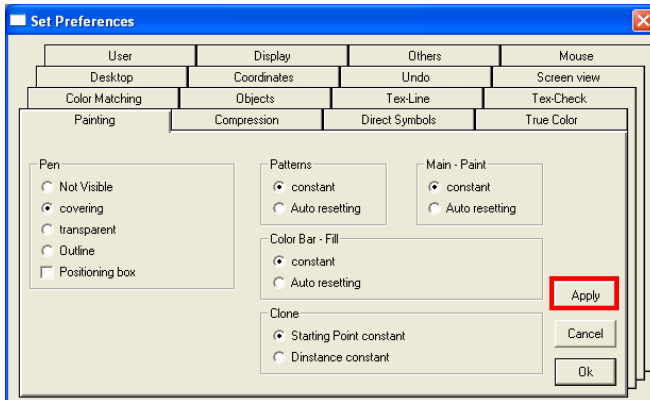
- There is a new file format for images; tdi. The *.imp file format is therefore replaced with the **TEX-DESIGN Image** - format **tdi**. This no longer requires the imi and prv files, which were previously necessary with the imp format. Now all essential information is saved in the one file. This makes it easier to manage your files, for example when you come to rename, or move them. Also, the tdi File Format is backwards compatible, so you can exchange files more easily with other users.



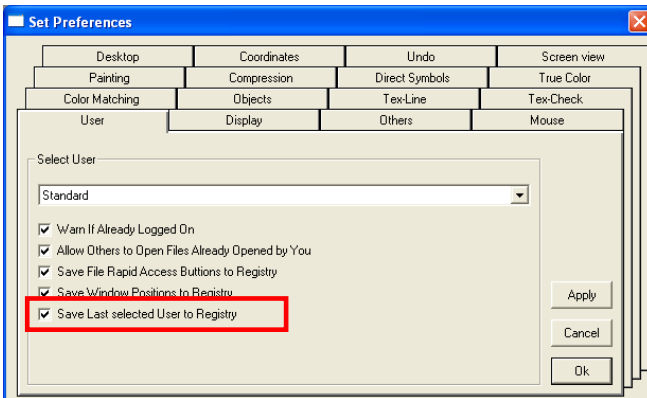
- There is a new file format for weaves; tdw. The *.tcw file format has been superceded by the new format *.tdw which is now also compatible with the "Tex-Catalog" and "Storyboard using template" features. Technically, the Simulation is always saved with the technical data, so you should no longer need to save the weave as a simulation, unless you want to exchange the weave with someone who does not have Tex-Check.

User settings

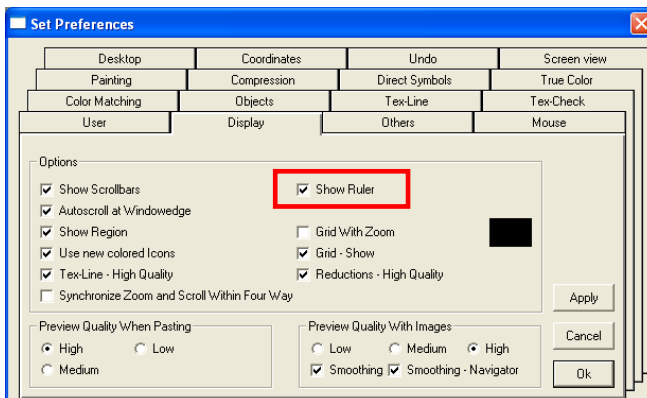
- In Settings - Preferences there is now an 'Apply' button that applies the settings in the selected tab without closing the window.



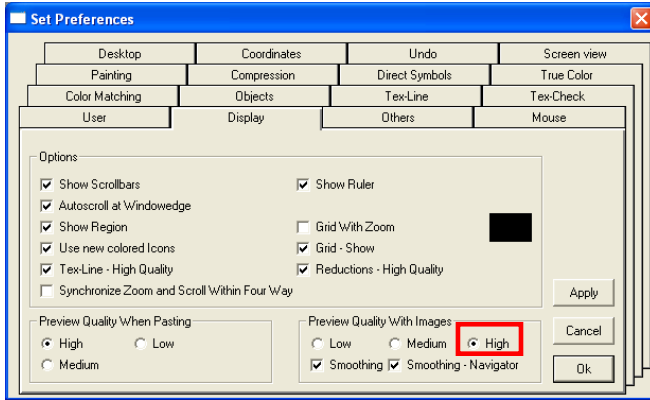
- Using the option 'Save Last selected User to Registry' in the preferences, the username can now be stored in the registry rather than in the win.ini.



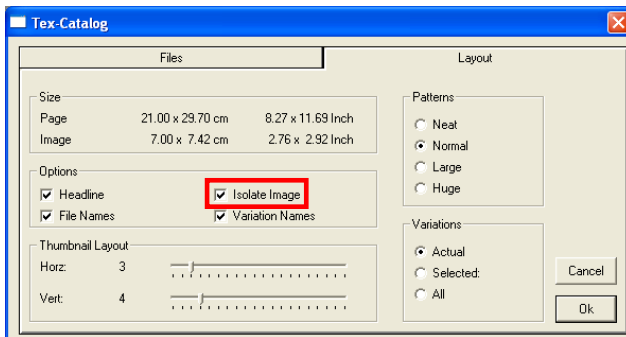
- In Preferences - Display you can now use 'Show Rulers' to automatically add rulers to each new image or weave you create.



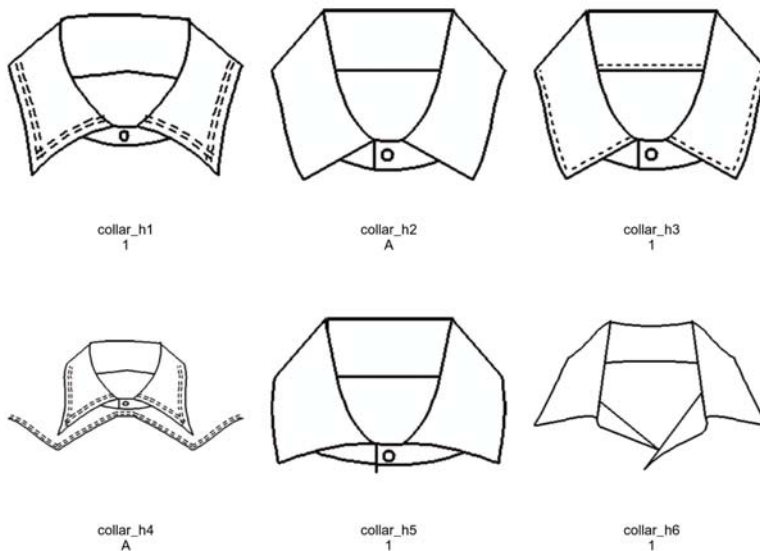
- In Settings - Display you can now select 'High' as a preview size which stands for 512 pixels.



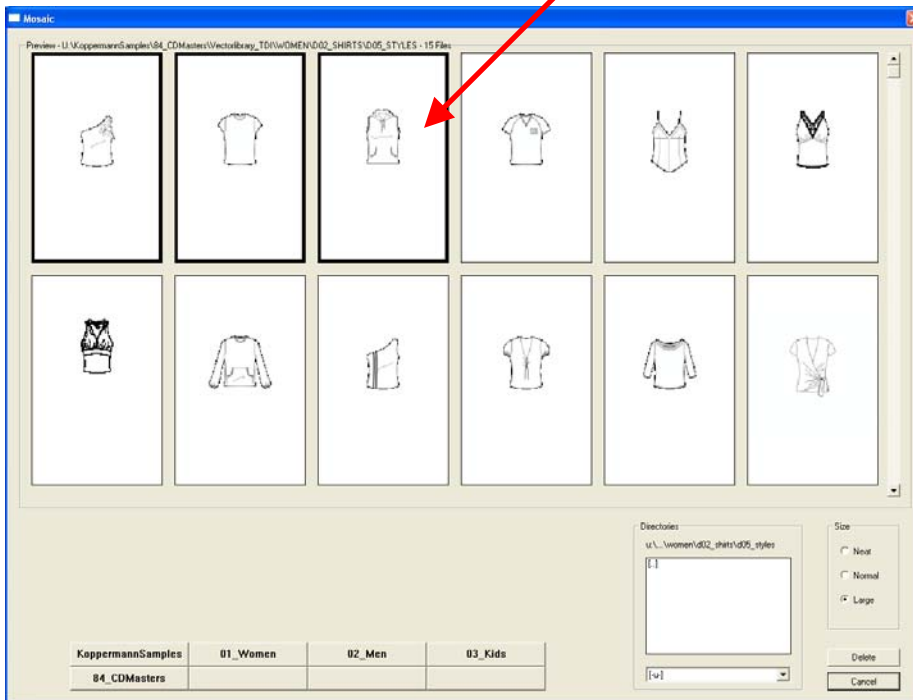
- When printing a **Tex-Catalog** you can now use cropping to only show the used part of each file in the Catalog.



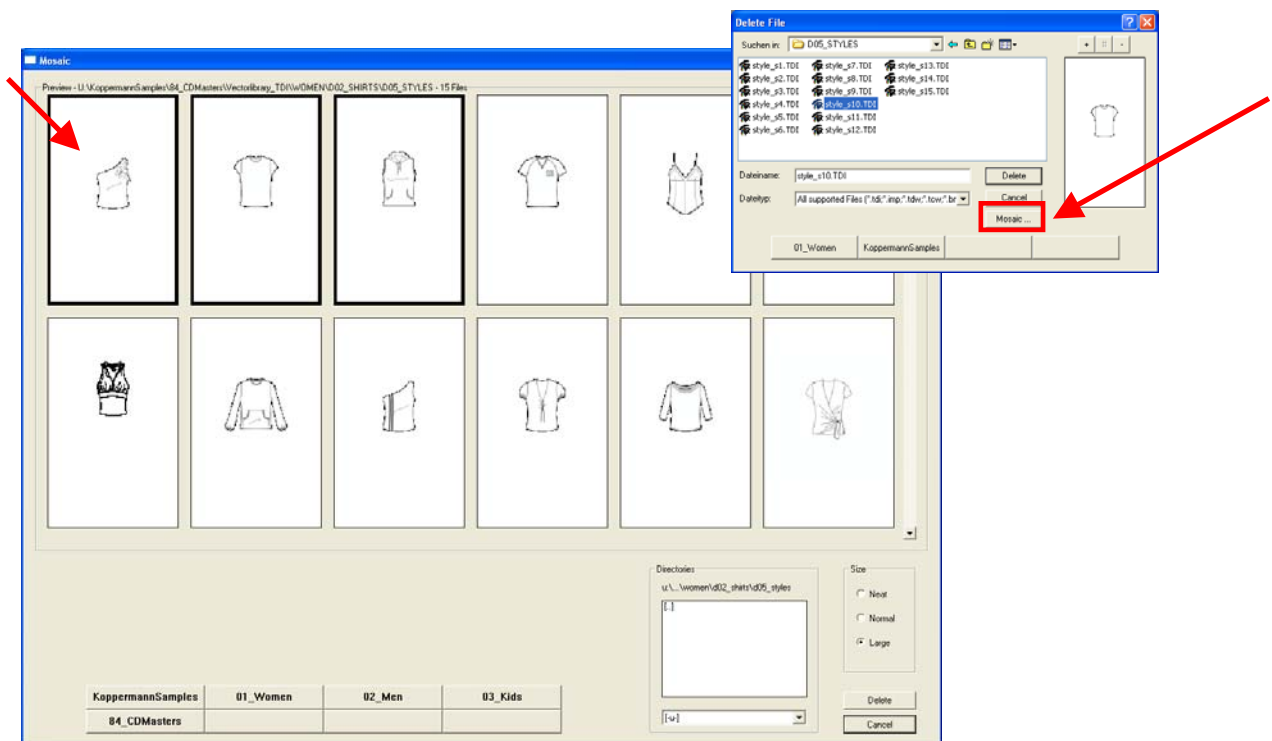
Catalog of U:\KoppermannSamples\84_CDMasters\Vectorlibrary_TDI\MEN\H01_SHIRTS\H03_COLLARS - Page 1 of 1



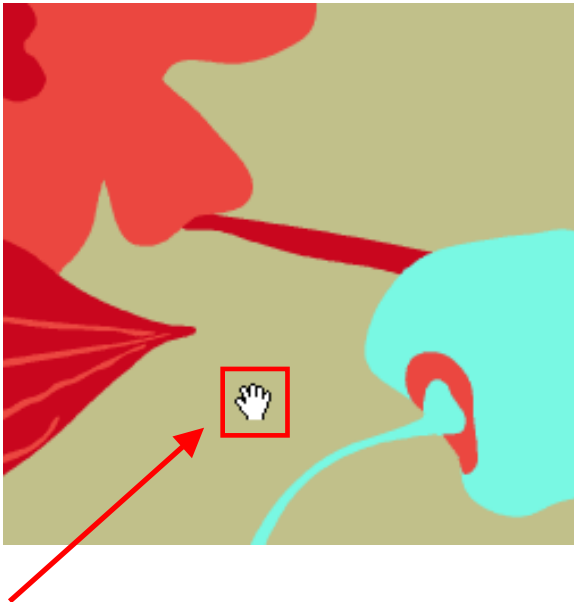
- In **File-Open-Mosaic** you can now open multiple files by pressing the CTRL key when selecting a file.



- In **File-Delete** you can now also use the **Mosaic** function and again select multiple files using the CTRL key to delete them.

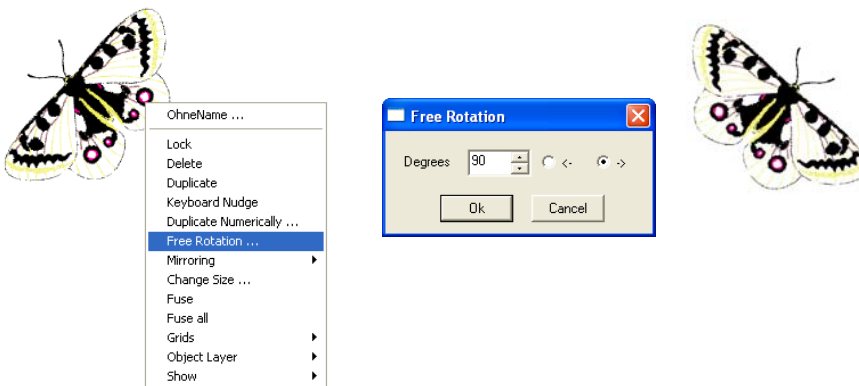


- You can now Pan within an image by pressing the Alt key and using the left mouse to **drag the image around**.



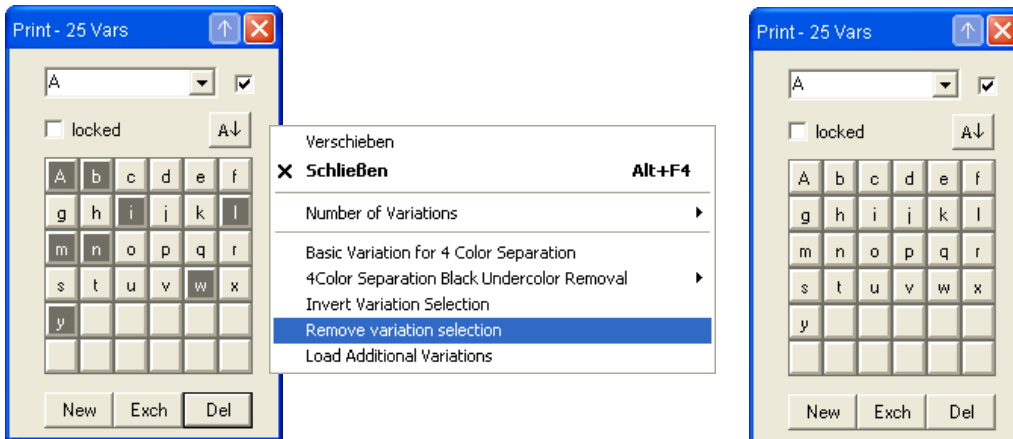
Objects

- In the context menu of an object, you can now **numerically rotate** the object.

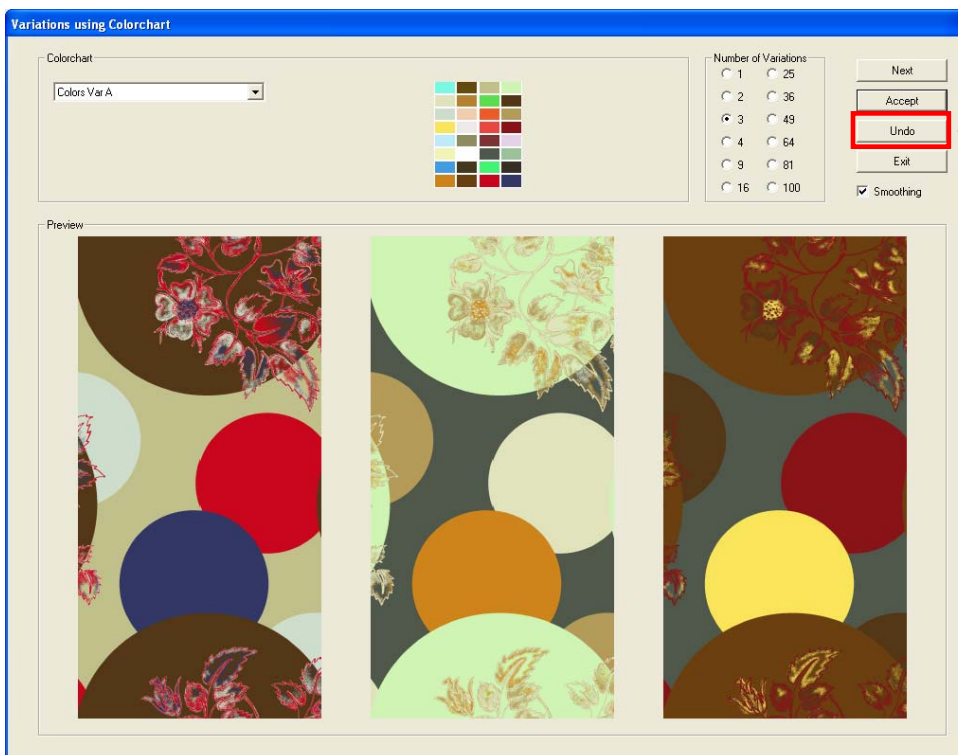


Colors

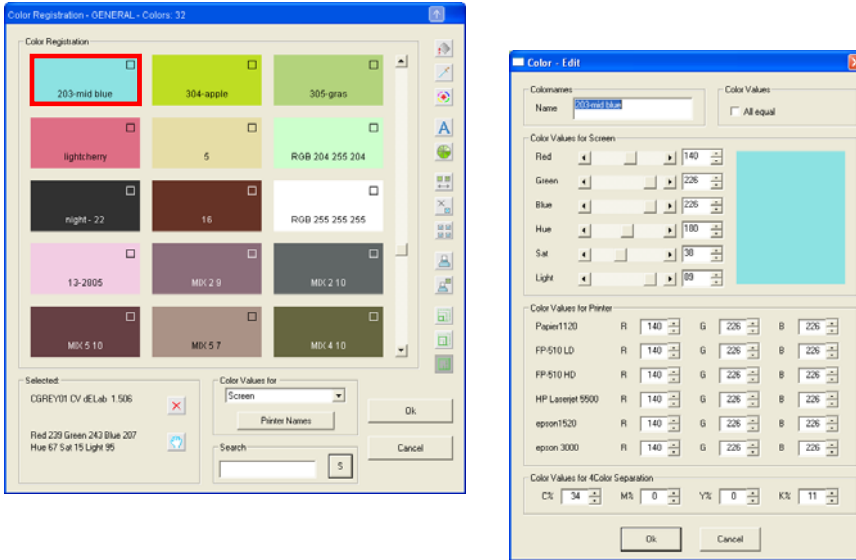
- In the System-Menu of the variations box there is now an option to **remove the variation selection**.



- When creating variations with a color chart, you have now an **undo** button.



- In the extended Color Registration, you can now **doubleclick on a color** to edit the color.

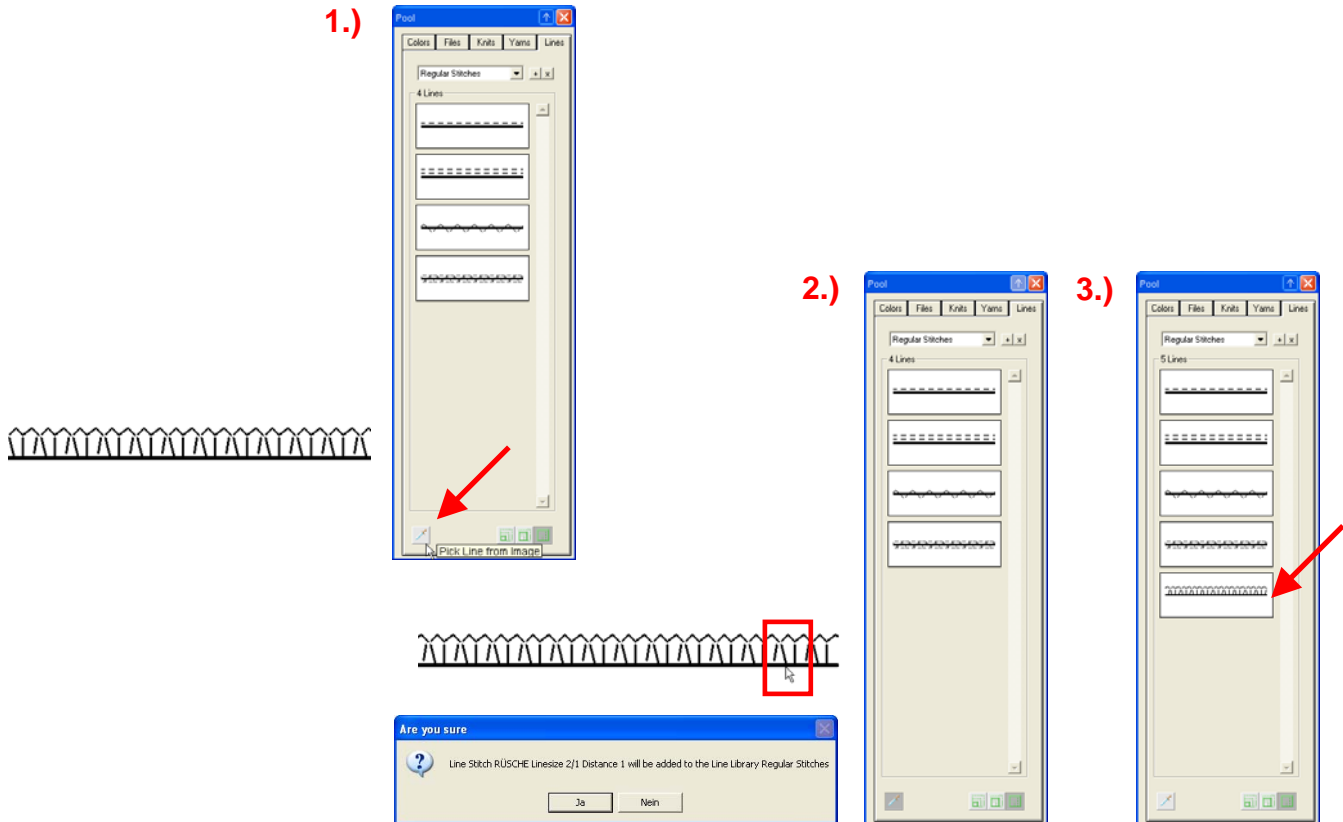


- In the extended Color Registration, you can now change the size of the Swatches between **neat, normal and large**.

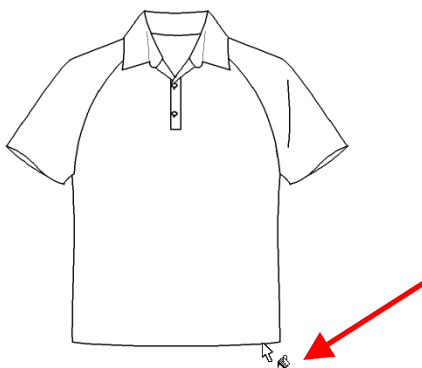


Tex-Line™

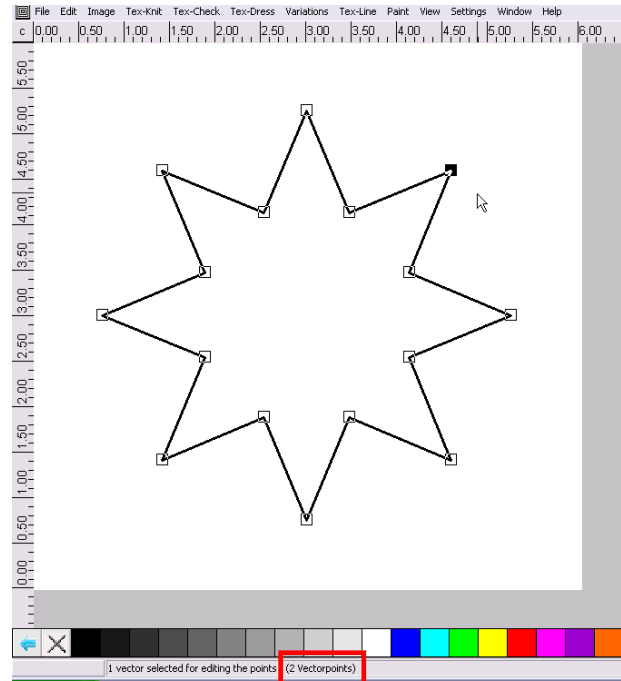
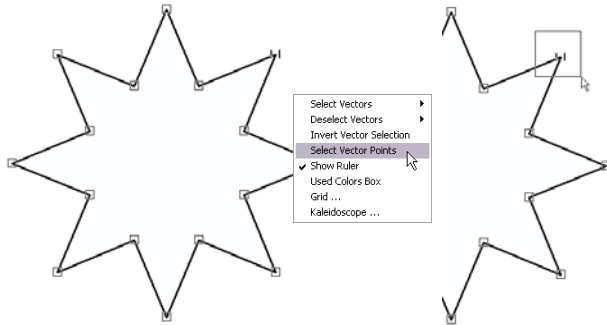
- In the Pool there is a new tab called 'Lines', which can be used to store frequently used line and stitch types. To add a line type, click on the Pippette Icon and then on the line in the image that you want to add to the library.



- To use a Line Type in the image, simply drag and drop the line from the Pool onto the line in the image.

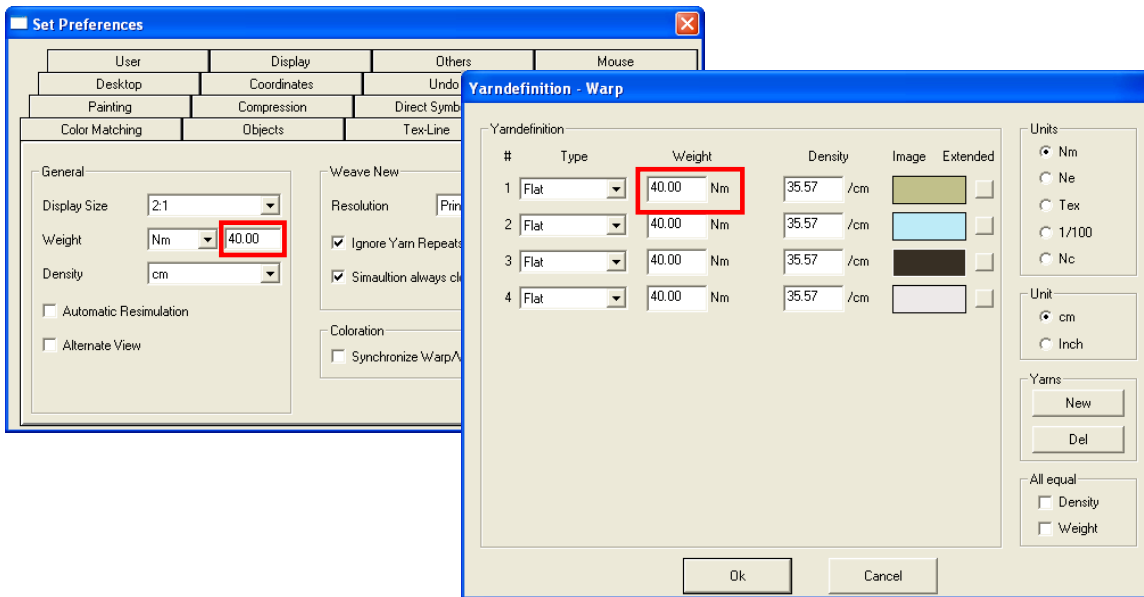


- When selecting vectorpoints, you can now see in the **Status bar** how many **vector points** are selected.

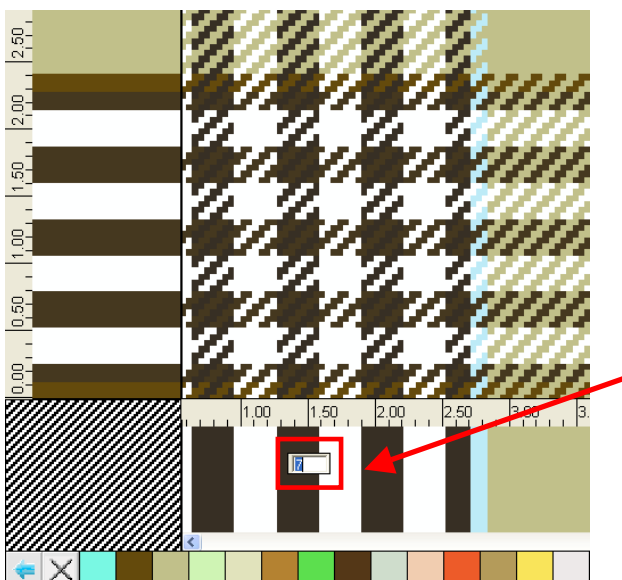


Tex-Check™

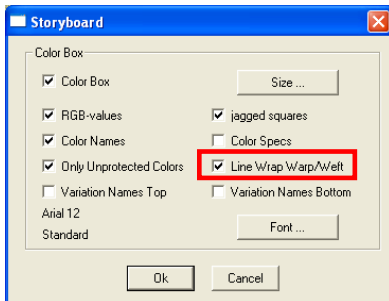
- In Preferences - Tex-Check you can now set a default **yarn weight** which is used when you add new yarns to your weave.



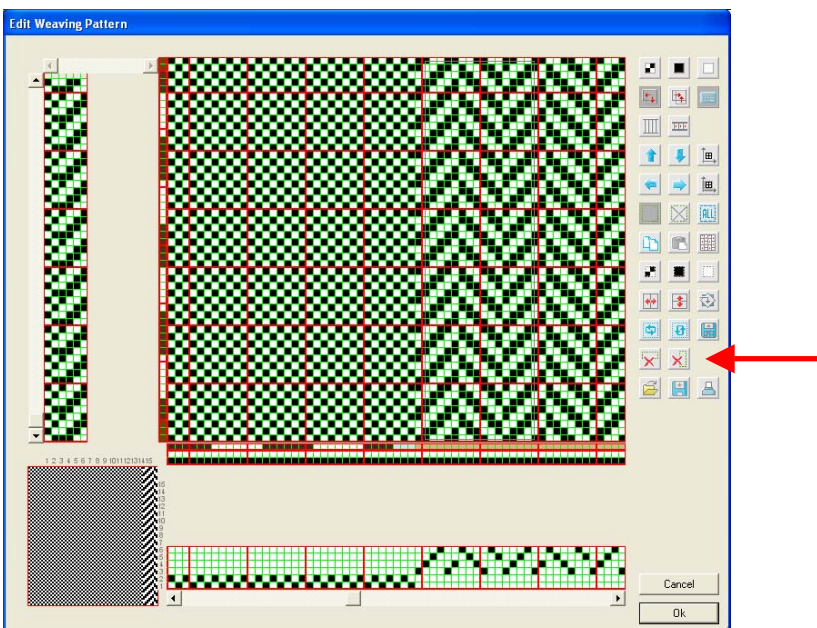
- The unit you choose in the yarndefinition will be saved in the weave file.
- You can now select the **number of yarns for a stripe** without entering the planning window by doubleclicking on the stripe and entering a number.



- When creating a storyboard with a weave, you can now have a **line break** between the color chips of the Warp and the Weft.



- You can now **delete parts** within a weaving pattern.



Tex-DressTM

- The maximum number of **grid points** has been raised to **512**.

